



# SPEAKEASY

Language School Barcelona



LEARN SPANISH



IMMERSE IN THE CULTURE



MAKE FRIENDS





BCN

Barcelona.....	03
Why choose Speakeasy.....	04
Our Casa Program.....	06
Spanish Courses.....	08
Long Term Courses .....	12
Course duration per level .....	14
Student life.....	16
Accommodation.....	18



41.38°N, 2.18°E

# BARCELONA IS THE PLACE TO LEARN!

---

Don't just learn the language - live it! With its warm climate, delicious food, golden beaches, famous architecture, festivals, markets, parks and vibrant nightlife - Barcelona has it all.

Just think, you'll be learning outside as well as inside the classroom in one of the most exciting and beautiful cities in the world.

That's why thousands of people come to Barcelona every year; to learn Spanish and enjoy the Spanish way of life.

And this year, we hope you'll join us.

*¡HASTA PRONTO!*



*¡HOLA!  
BIENVENIDOS A BARCELONA*

# WHY CHOOSE SPEAKEASY?

---

"Teaching Spanish is our passion and we're committed to offering you high quality courses at affordable prices. Moreover, we have a really vibrant student community here at Speakeasy, where you get much more than just a great education"

Soren Kohnke, Director

---



## Here are some of the reasons why Speakeasy is Barcelona's leading Spanish school...



### OUR COURSES

We offer more than 15 different high quality Spanish courses at Speakeasy. We have both morning, afternoon and evening courses to suit your personal needs and schedule.



### ACCREDITED BY CERVANTES

Speakeasy Language School has the accreditation of the Cervantes Institute, a government agency responsible for promoting the study and the teaching of Spanish language and culture in the world.



### COMMUNICATIVE IMMERSION APPROACH

We use a communicative and practical approach to learning Spanish. The objective of the vocabulary, grammar and pronunciation that you learn, is to be able to communicate in Spanish in an effective way. We use an immersion method of teaching Spanish, which means that all the teaching and textbooks are in Spanish.



### SMALL GROUPS & INTERNATIONAL STUDENTS

We keep our groups small in order to keep class quality high and facilitate the learning process. Our students come from all over the world and there are usually 5 or 6 different nationalities in each class. The average age of our students is 27 years and you will usually find a good mix of ages in each class.



### OUR TEACHERS

For Speakeasy Language School, the quality of our teaching is very important to us. Our faculty consists solely of highly qualified native Spanish teachers with years of experience teaching Spanish to foreigners. We have an academic team comprising Spanish language or translation graduates with specific training in ELE (Spanish as a Foreign Language).



### SCHOOL FACILITIES & SERVICES

- Modern classrooms with interactive boards projectors
- Free wireless connection
- Library for borrowing books
- Weekly extra-curricular activities
- Accommodation assistance
- Visa services
- Student card with great discounts
- Mobile app for students with personalized schedules, reservation information, attendance data, and documents



### STUDENT LIFE

For us, it's important that our students are happy, both inside and outside the classroom. We have a vibrant student community here at Speakeasy with a variety of after school activities and trips every week, making it easy for you to make friends from around the world.



### SCHOOL LOCATION

Speakeasy Spanish School is located in the very center of Barcelona, close to Plaza Catalunya and La Rambla, surrounded by shops and restaurants and fast access to 3 central Metro stations and over 25 bus lines.





*¿CÓMO SE DICE ...  
EN ESPAÑOL?*

# OUR CASA PROGRAM

---

Since 2001, Speakeasy has been helping students from around the world to learn Spanish with outstanding results thanks to the CASA program, our teaching method based on the Cervantes Institute curricular plan.

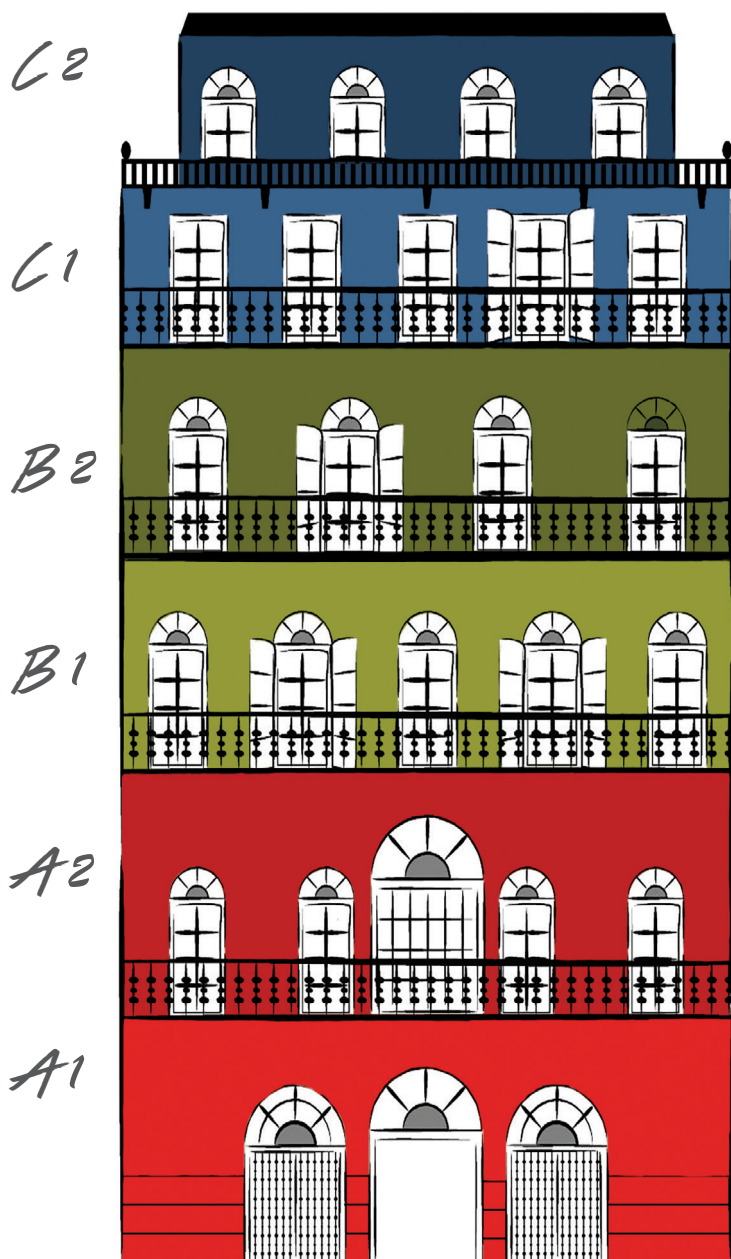
---



## Let's imagine that learning Spanish is like building a house with many floors.

You can't build the next floor if the one below is not complete. That's why our CASA program is divided into 6 floors and organized into 13 courses. Each floor corresponds to the 6 levels of the *Common European*

**CASA**program®



*Framework of Reference for Languages* that help you build your Spanish language from beginner right through to advanced.

The Speakeasy teaching method is based on a modern immersion philosophy, which means that all teaching and textbooks are in Spanish. By studying with us you'll be encouraged to listen, speak, read and write only in the language that you're learning.

### FLOOR 6. LEVEL C2 (C2.1 / C2.2)

Fantastic! You did it! You have a native level and now you are able to speak, understand or write at a professional level - the level of an expert.

### FLOOR 5. LEVEL C1 (C1.1 / C1.2)

Excellent! At this point, you have acquired an extensive knowledge of Spanish. Now you will be able to speak about any topics, understand any audio, articles or conversation and be able to write any kind of text.

### FLOOR 4. LEVEL B2 (B2.1 / B2.2)

Let's go! The 4th floor is a level of improvement. You will reinforce your knowledge and improve your comprehension and written expression. You will also be able to speak more fluently.

### FLOOR 3. LEVEL B1 (B1.1 / B1.2 / B1.3)

Brilliant, you keep going up! We will study different themes such as funny stories, your CV, your travels etc. You will also increase your vocabulary and improve your general understanding. You will be able to use the past or future or the conditional tenses as well as start to learn "el subjuntivo".

### FLOOR 2. LEVEL A2 (A2.1 / A2.2)

Very good! From now on, you will learn how to speak about your past and future plans. You will be able to interact in many social contexts or express your opinion on various topics.

### FLOOR 1. LEVEL A1 (A1.1 / A1.2)

Let's go! You start with the basic, but you will quickly be able to use Spanish in everyday life through learning basic grammar and vocabulary.

TEST YOUR LEVEL FOR FREE AT  
[www.speakeasybcn.com](http://www.speakeasybcn.com)



---

*¿HABLAS ESPAÑOL?*

# OUR SPANISH COURSES

## OUR MOST POPULAR COURSE

---

### INTENSIVE SPANISH COURSE

This is our most popular course and is great for people who want to focus on learning Spanish and progress quickly.

20 hours a week (4 hours per day)

**Schedule:**

09.00 to 13.00 - Monday to Friday  
(All times are subject to availability)

### *STARTS EVERY WEEK*

\*if you are a beginner you can start every 2<sup>nd</sup> week

*¿DE DÓNDE ERES?*

---



## SEMI-INTENSIVE SPANISH COURSE

This course is ideal for people who want to combine learning Spanish with working or studying part time.

**10 hours a week** (2 hours per day)

### Schedule:

13.30 to 15.30 - Monday to Friday

17.30 to 19.30 - Monday to Friday

(All times are subject to availability)

### *STARTS EVERY WEEK*

\*if you are a beginner you can start every 4<sup>th</sup> week

## EVENING SPANISH COURSE

This course is perfect for students who are working or studying during the day and would like to learn Spanish during the evening.

**6 hours a week** (3 hours per class)

### Schedule:

18.00 to 21.00 - Monday & Wednesday or

Tuesday & Thursday

(All times are subject to availability)

### *STARTS EVERY WEEK*

\*if you are a beginner you can start every 6<sup>th</sup> week

## IMMERSIVE SPANISH COURSE

You'll study 10 hours of general Spanish each week and complement these with 10 hours of Spanish cultural activities and workshops. Our Spanish immersion workshops take a more hands-on approach.

**20 hours a week** (4 hours per day)

### Schedule:

13.30 to 15.30 or 17.30 - 19.30 group classes

and 15.30 - 17.30 Immersion workshops

Monday to Friday

(All times are subject to availability)

### *STARTS EVERY WEEK*

\*if you are a beginner you can start every 4<sup>th</sup> week

## SUPER-INTENSIVE SPANISH COURSE

Make the most of being in Barcelona! This course is great for students who want to learn as much Spanish as possible. You will study 6 hours every day including an hour conversation class and an hour business Spanish class.

**30 hours a week** (6 hours per day)

### Schedule:

09.00 to 13.00 and 15.30 to 17.30 - Monday to

Friday (all times are subject to availability)

### *STARTS EVERY WEEK*

\*if you are a beginner you can start every 2<sup>nd</sup> week



*ME LLAMO...*

---

# MORE COURSES

---

---

## CONVERSATION CLASSES

This course is designed for people who want to practice and improve their conversation skills further. You'll cover a range of exercises that will teach you how to express yourself with confidence. You need at least a B1 level to attend these classes.

Our Conversation classes can be booked independently or in addition to our Intensive or Semi-Intensive Spanish courses.

**Schedule:**

15:30 to 16:30 - Monday to Friday  
(All times are subject to availability)

*AVAILABLE FROM A2.2 LEVEL*

---

## BUSINESS SPANISH

This course gives you useful language and phrases to improve your spoken communication skills in Spanish in different business situations. You will learn Spanish actively by doing different tasks related to the business world such as preparing a report or negotiating.

Our Business classes can be booked independently or in addition to our Intensive or Semi-Intensive Spanish courses.

**Schedule:**

16:30 to 17:30 - Monday to Friday  
(All times are subject to availability)

*AVAILABLE FROM A2.2 LEVEL*



---

## PRIVATE SPANISH CLASSES

Our private Spanish lessons are designed for individuals, couples, friends and small groups with specific learning goals.

Your teacher will adapt the Spanish course to meet your requirements and build your Spanish level by level using our immersion teaching method.

*AT SPEAKEASY  
AT YOUR HOME  
OR ONLINE!*

---

## DELE COURSE

DELE is the official accreditation recognised by the Ministry of Education in Spain. Our DELE courses are designed to prepare you for the B2 level exam.

You'll cover everything you need to know to pass the exam, plus in depth techniques for achieving the best results..

**Course duration:**

2, 3, or 4 weeks

**Schedule:**

13:30 to 17:30 - Monday to Friday  
(All times are subject to availability)

Please contact us for the DELE course start dates.

---

## 12H OR 24H/WEEK COMBINATION

This course is great for students who want to have group lessons with the added benefit of combining them with private lessons.

With our combination Spanish course you have the best of both worlds. You get to enjoy the social aspect of studying in a group while still being able to focus on your specific learning needs.

---

## 20H OR 30H/WEEK EXPRESS COURSE

This course is built around our CASA immersion program and based on private lessons.

With Express Spanish you'll get the one to one support you need to develop your Spanish language skills in the fastest time possible.

*IF YOU HAVE NO  
TIME TO LOSE*



# LONG-TERM SPANISH COURSES

*¡ME GUSTAS TÚ!*

Our Long-term Spanish courses are a great option if you want to learn Spanish and enjoy living in Barcelona for a longer period of time. These courses meet the requirements to apply for a student visa in Spain.

Choose between accelerated and immersive programs depending on your preference of schedule and learning goals.

---

## 24 WEEK IMMERSIVE LONG-TERM

Monday through Friday  
13.30-15.30 or 17:30 - 19:30 & 15.30 - 17.30h

Course price includes:

- 15 week 10h Semi-Intensive Spanish Course
- Daily Spanish immersion workshops
- 9 weeks of holidays
- Books & registration fee
- Visa documents

---

## 36 WEEK IMMERSIVE LONG-TERM

Monday through Friday  
13.30-15.30 or 17:30 - 19:30 & 15.30 - 17.30h

Course price includes:

- 24 week 10h Semi-Intensive Spanish Course
- Daily Spanish immersion workshops
- 12 weeks of holidays
- Books & registration fee
- Visa documents

---

## 48 WEEK IMMERSIVE LONG-TERM

Monday through Friday  
13.30-15.30 or 17:30 - 19:30 & 15.30 - 17.30h

Course price includes:

- 30 week 10h Semi-Intensive Spanish Course
- Daily Spanish immersion workshops
- 18 weeks of holidays
- Books & registration fee
- Visa documents

---

## 52 WEEK IMMERSIVE LONG-TERM

Monday through Friday  
13.30-15.30 or 17:30 - 19:30 & 15.30 - 17.30h

Course price includes:

- 34 week 10h Semi-Intensive Spanish Course
- Daily Spanish immersion workshops
- 18 weeks of holidays
- Books & registration fee
- Visa documents

## VISA HELP

Speakeasy will help you with the visa application process, which can be quite complex and time consuming. We have years of experience helping non-EU citizens to obtain their long-term student visas.

You can take comfort in the fact that we will be there for you along the whole way.

*FOR MORE INFORMATION  
PLEASE CONTACT US!*

## 24 WEEK ACCELERATED LONG-TERM

Monday through Friday 9.00-13.00h

Course price includes:

- 22 week 20h Intensive Spanish Course
- 2 weeks of holidays
- Books & registration fee
- Visa documents

## 30 WEEK ACCELERATED LONG-TERM

Monday through Friday 9.00-13.00h

Course price includes:

- 26 week 20h Intensive Spanish Course
- 4 weeks of holidays
- Books & registration fee
- Visa documents

## 36 WEEK ACCELERATED LONG-TERM

Monday through Friday 9.00-13.00h

Course price includes:

- 26 week 20h Intensive Spanish Course
- 4 week DELE Exam Preparation Course
- 6 weeks of holidays
- Books & registration fee
- Visa documents

## 42 WEEK ACCELERATED LONG-TERM

Monday through Friday 9.00-13.00h

Course price includes:

- 32 week 20h Intensive Spanish Course
- 4 week DELE Exam Preparation Course
- 6 weeks of holidays
- Books & registration fee
- Visa documents

## 48 WEEK ACCELERATED LONG-TERM

Monday through Friday 9.00-13.00h

Course price includes:

- 36 week 20h Intensive Spanish Course
- 4 week DELE Exam Preparation Course
- 8 weeks of holidays
- Books & registration fee
- Visa documents



# BUILD YOUR SPANISH FLOOR BY FLOOR

Here you can see how each course proceeds and how long it takes to pass each level

## BEGINNER

	A1.1	A1.2	A2.1	A2.2
<b>30h/week Super Intensive</b>	2 weeks	2 weeks	2 weeks	2 weeks
<b>20h/week Intensive</b>	2 weeks	2 weeks	2 weeks	2 weeks
<b>10h/week Semi-Intensive</b>	4 weeks	4 weeks	4 weeks	4 weeks
<b>6h/week Evening Classes</b>	6 weeks	6 weeks	6 weeks	6 weeks
<b>24h/week Combined</b>	2 weeks	2 weeks	2 weeks	2 weeks
<b>12h/week Combined</b>	4 weeks	4 weeks	4 weeks	4 weeks



¡BUEN VIAJE!

### INTERMEDIATE

### ADVANCED

INTERMEDIATE			ADVANCED					
B1.1	B1.2	B1.3	B2.1	B2.2	C1.1	C1.2	C2.1	C2.2
2 weeks	2 weeks	2 weeks	12 weeks	12 weeks	12 weeks	12 weeks	12 weeks	12 weeks
2 weeks	2 weeks	2 weeks	12 weeks	12 weeks	12 weeks	12 weeks	12 weeks	12 weeks
4 weeks	4 weeks	4 weeks	24 weeks	24 weeks	24 weeks	24 weeks	24 weeks	24 weeks
6 weeks	6 weeks	6 weeks	30 weeks	30 weeks	30 weeks	30 weeks	30 weeks	30 weeks
2 weeks	2 weeks	2 weeks	12 weeks	12 weeks	12 weeks	12 weeks	12 weeks	12 weeks
4 weeks	4 weeks	4 weeks	24 weeks	24 weeks	24 weeks	24 weeks	24 weeks	24 weeks



# OUR SPEAKEASY ACTIVITIES

*¡VAMOS A LA  
PLAYA!*





## At Speakeasy there is always something fun going on, inside and outside the classroom.

We offer several activities every week and we try to differentiate them as much as possible, mixing a bit of culture with fun and exciting activities, there is always something for everyone.

Examples of these activities include parties, bike tours, beach days, museums, wine tours, tapas, paella,

cooking classes, boat trips, Gaudi tours, weekend trips to Girona, Tarragona, Cadaques, Valencia, France, ski-trips to Andorra and much more!

Is there anything special you want to do or see in Barcelona? Just tell us and we will make sure you won't miss a thing.

## Get ready to make lots of friends from around the world with Speakeasy Language School!







*¡MI CASA ES TU CASA!*

## ACCOMMODATION

# YOUR HOME AWAY FROM HOME

---

Speakeasy is partnered with a brand-new student residence directly connected to the school by public transportation to provide our students with special rates and flexibility when planning their stay in Barcelona. Reservations for this type of accommodation are made directly through Speakeasy.

For other kinds of accommodation, we collaborate with local accommodation providers in order to offer our students a variety of options. Most are located within 20 minutes from the school and the city

---

---

## STUDENT RESIDENCE

In our student residence you'll have a room with a single bed, private bathroom, air conditioning and heating. Bookings can include only accommodation, breakfast and dinner, or all meals in the residence cafeteria.

Also included are a variety of other student services such as a gym, study areas, rooftop terrace, media room, laundry room and more! The minimum stay is one week, but days can be added to reservations to accommodate your arrival and departure.

**Minimum stay: 1 week**

---

## SHARED APARTMENT

A shared apartment means that you have your own room in a shared apartment with other students. As the minimum stay is 1 month, this option is more suited to our longer-term students. Normally you live with 1-2 other students. You will have your own room with a desk, closet, your own keys and access to all shared areas of the flat. Food is not included, but will have a shared kitchen to cook your own meals. All the apartments have a Wi-Fi connection, linens, and cleaning service included.

**Minimum stay: 1 month**

---

## PRIVATE APARTMENT

Having a private apartment means that you will have an entire centrally located apartment to yourself. Our partner offers a wide portfolio of private apartments with the highest standards. All of them fully furnished, equipped and nicely decorated.

**Minimum stay: 1 month**

---

## FAMILY HOMESTAY

A family homestay is an excellent way to practice your Spanish and experience Spanish culture firsthand. You will have your own room with a desk and closet, your own keys and access to all shared areas of the flat. The laundry and cleaning are included. You will have the option to include breakfast and dinner if you prefer. All the apartments have a Wi-Fi connection and include linens.

**Minimum stay: 1 week**

*YOUR HOME AWAY  
FROM HOME!*



---

**Address:** Ronda Universitat 7,  
08007 Barcelona

**Metro:** Universitat, Plaça  
Catalunya, Passeig de Gràcia

**E-mail:** [info@speakeasybcn.com](mailto:info@speakeasybcn.com)

**Tel:** + 34 933 427 197

**Opening Hours:** Monday - Friday  
8.30h - 18.30h

---



**SPEAKEASY**

[www.speakeasybcn.com](http://www.speakeasybcn.com)

